

British furniture designer/maker Michael Armstrong established Afid Design in 2005, providing a commission based service for bespoke hand-made furniture as well as developing products for manufacture. Located in Newcastle upon Tyne, Michael works with private clients, architects, interior designers, manufacturers and retailers

### Furniture

#### **t2 - Coffee/Occasional Table**

The t2 coffee table is a moulded timber structure that can be produced in a variety of colours and finishes. The table incorporates elegant curves that work on several planes, creating a piece that constantly changes form and detail from whichever direction you view it. The piece incorporates an inherent storage space and appears to 'float' just above the ground. Available with 3 or 4 'legs'

900 x 900 x 300 (4-sided option)  
700 x 700 x 300 (3-sided option)  
(Other sizes available on request)



#### **t2A - Coffee/Occasional Table**

The t2A is a heat formed acrylic table produced in a variety of colours and opacities, from clear to solid. The table incorporates elegant curves that work on several planes, creating a piece that constantly changes form and detail from whichever direction you view it.

900 x 900 x 230 (4-sided option)  
700 x 700 x 230 (3-sided option)



#### **T3 - Coffee Table**

A stylish low table made in solid wood and treated with Danish oil to give a beautiful hard-wearing matt sheen finish. The form is simple in nature incorporating radius details and a split top giving the table a clean uncomplicated aesthetic.

900 x 600 x 300  
(other sizes available on request)



#### **T3 - Dining Table**

A stylish dining table made in solid wood and treated with Danish oil to give a beautiful matt sheen hard-wearing finish. The form is simple in nature incorporating radius details and a split top giving the table a clean uncomplicated aesthetic.

2000 x 900 x 750  
(other sizes available on request)



#### **'jimi' 1 – Coat Stand**

An elegant floor-standing coat stand, 'jimi' is a tribute to Jimi Hendrix's 1968 Flying-V guitar. Produced in clear lacquered veneered plywood, lacquered MDF or powder-coated steel.

400 x 400 x 1700



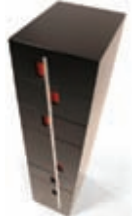
### 'split' SB1 – Storage Unit

The 'split' sb1 storage unit is a low, striking piece of furniture that plays with graphic elements and colours within a simple form. A 'line' of metal cuts through the layers of each compartment and is randomly punctuated with flashes of bold colour, creating a distinctive piece of contemporary furniture  
1800 x 650 x 450 (other sizes available on request)



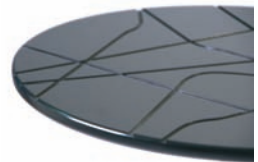
### 'split' DR1 – Drawer Unit

The 'split' DR1 drawer unit is a piece of furniture that plays with graphic elements and colours within a simple form. A 'line' of metal cuts through the layers of each compartment and is randomly punctuated with flashes of bold colour, creating a distinctive piece of contemporary furniture  
270 x 1220 x 350 (other sizes available on request)



### V68 – Occasional Table

A simple circular lacquered top incorporating linear surface decoration with powder-coated steel legs.  
500 x 500 x 700 (other sizes available on request)



### 'sarny' SIT1 – Lounge Chair

The 'sarny' SIT1 chair incorporates an upholstered moulded plywood seat and epoxy powder coated base. Wool upholstery wraps around three planes of the seat, creating a subtle graphic line that runs along the edge of the chair body.  
590 x 700 x 650



### 'sarny' SIT2 – Lounge Chair

The 'sarny' SIT2 chair incorporates an upholstered moulded plywood seat and epoxy powder coated base. The chair incorporates a luxurious dark wood veneered body with solid wood edging and leather-upholstered cushions  
590 x 700 x 650



### 'little jimi' – Coat Hook

Big Jimi's little brother. Individual wall-mounted coat hooks Available in veneered birch plywood and powder-coated steel.  
150 x 275 x 100



### SQ – Side Tables

Veneered side tables with solid hardwood edging. A simple design that can be produced in any size or finish including leather.  
450 x 450 x 450 Standard (other sizes available on request)



**afid design**

Michael Armstrong Furniture designer:maker Afid Design Mushroom Works St Lawrence Road Newcastle upon Tyne NE6 1AR  
+44 (0) 191 224 4011 +44 (0) 7971 564 513 info@afiddesign.co.uk www.afiddesign.co.uk